



# 2022 Adopted Budget & Plan

## Adopted Version

January 1, 2022 - December 31, 2022

[Introduction](#)

[Budget-in-Brief](#)

[Budget Overview](#)

[Funding Sources](#)

[Fund Summaries](#)

[Departments](#)

## Domestic Relations Court

### Denise L. Cross

Presiding & Administrative Judge

The Domestic Relations Court is a division of the Montgomery County Common Pleas Court, empowered by statute to hear all divorce dissolutions, legal separations, annulments and civil domestic violence cases for Montgomery County. The Court also maintains jurisdiction over post-decree matters, such as spousal support, allocation of parental rights, child support, parenting time issues and other related matters.

Administrative Judge Denise L. Cross and Judge Timothy D. Wood lead the court. Staff assigned to several departments assist the Judges in meeting the Court's responsibilities. Duties are shared among the bailiffs, court reporters, judicial assistant, administrators, magistrates, staff attorneys, information system manager and technician, legal secretaries, assignment and compliance officers, court operations specialists, customer service specialist and navigator, family investigators, parent educators, domestic violence public coordinator and mediators.

The Domestic Relations Court takes great pride in understanding the needs of the community and responding to these needs with an efficient and well-trained staff. Essential education on current legal standards, access to justice, safety, mediation and customer service are just part of the annual curricula for staff. The Court regularly collaborates with other divisions and agencies to better integrate resources and proactively address community issues and trends in the justice system.

Through these efforts, the Domestic Relations division continues to evolve with social, legal and technological changes to better serve the families before the court.





- Providing quality services to the public
- Ensuring efficient case management by a professional and courteous staff
- Offering easy access to the court for prompt problem resolution

## **Goals and Objectives**



- Offer training on enhanced electronic filing to professionals participating in Domestic Relations Court and maintaining regular contact with attorneys through on-going training, meetings and email newsletters
- Continue fostering agency collaboration to improve cohesion of services and communication
- Provide community education on the legal system and ways to access services
- Provide on-going training opportunities for staff, including customer service, safety, security and professional skills development
- Assure that all resources are used to fully benefit the Montgomery County citizens and Domestic Relations Court participants

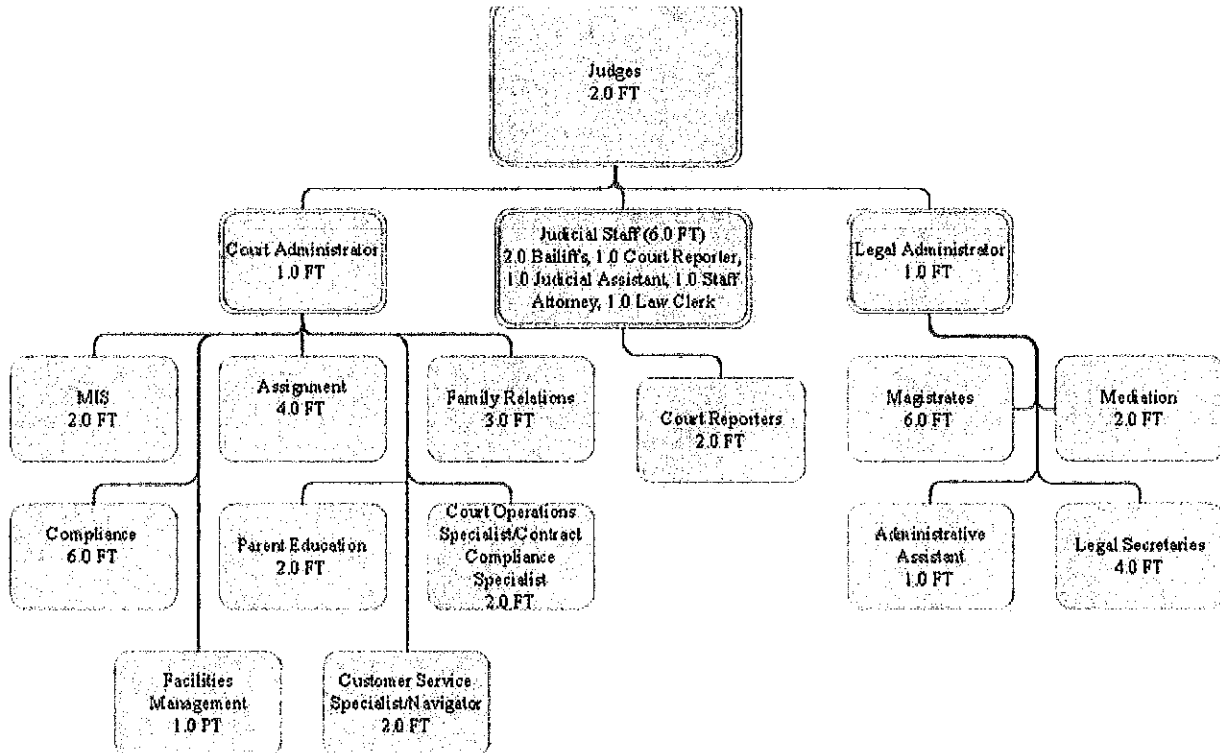
## **Challenges**



- Providing a streamlined approach to e-filing domestic violence and dating violence petitions requesting civil protection orders, and reducing duplicative efforts in form completion
- Monitoring procedures to ensure cases are handled expeditiously, judiciously and consistently for all self-represented and attorney-represented parties
- Closely monitoring the budget to ensure funding is used in a way that best serves our citizenry, providing a safe environment utilizing technology efficiencies



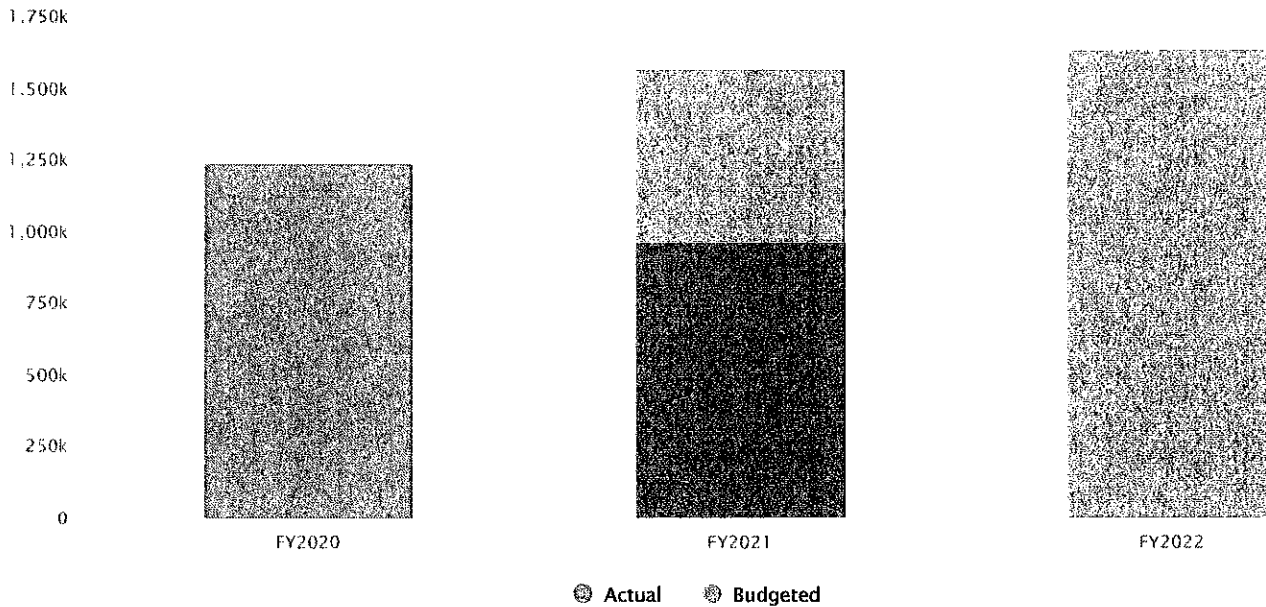
New Filings for Divorce	986	960	975	975
New Filings for Dissolutions	631	600	605	605
New Filings for Legal Separations	20	7	16	16
New Filings for Annulments	5	9	12	12
Custody Motions	283	197	219	219
Parenting Time Motions	127	108	109	109
Property/Other Motions	364	284	314	314
Support Motions	911	811	784	784
CS (New - Custody and Support Cases)	14	53	48	48
Motions Dismissed by Parties	1,090	500	574	574
Motions Dismissed by the Court	295	715	731	731
Final Orders - Divorce Decrees	872	808	877	877
Final Orders - Dissolution Decrees	581	545	564	564
Final Orders - Annulment Decrees	8	2	9	9
Final Orders - Legal Separation Decrees	3	10	7	7
Family Relations Investigations	87	75	57	57
Mediations	143	83	100	100
New Case/Motion Reviews (Self-Represented)	2,131	3,121	3,661	3,661
Domestic Violence Petitions Filed	2,041	1,872	2,094	2,094
Notice of Withholding Orders Prepared	1,335	920	856	856
Child Support Emancipation Entries	3,456	3,067	2,137	2,137
Parent Education Seminar Attendance	893	832	919	919
Conciliation Counseling	40	38	16	16

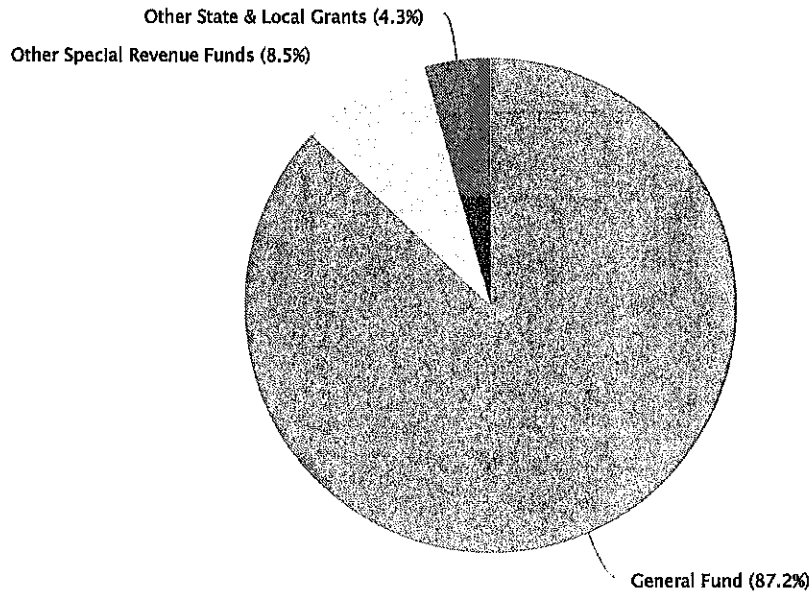


### Revenues Summary

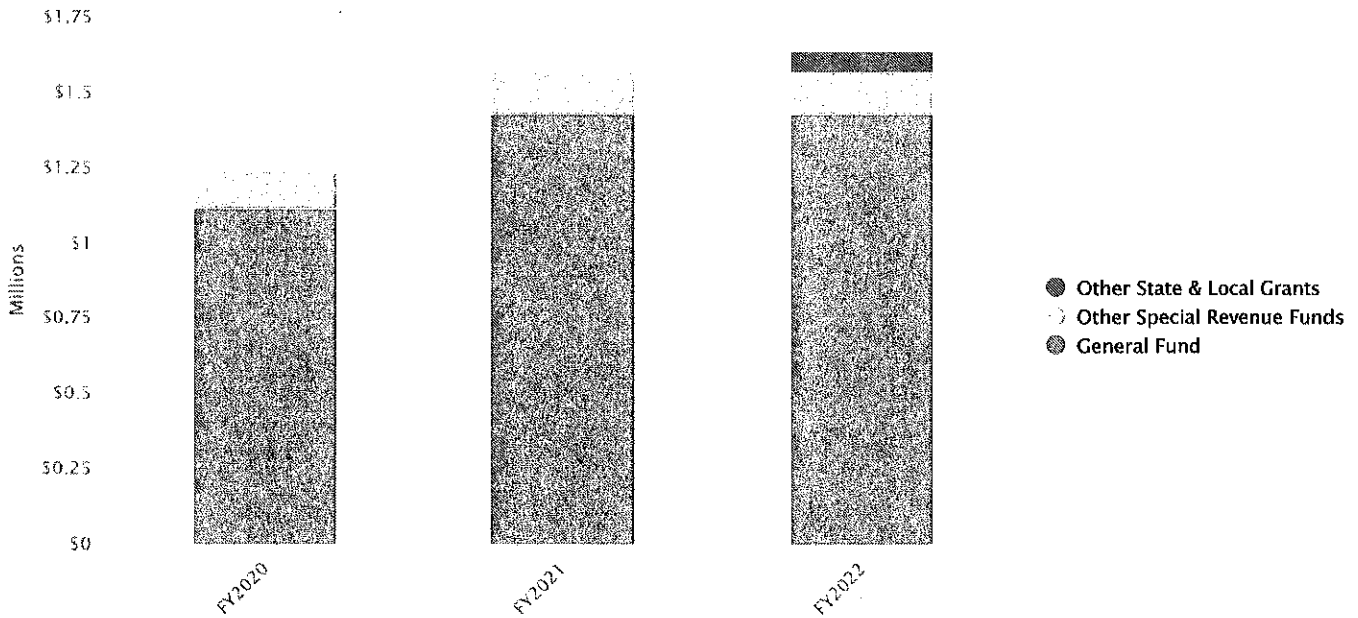
**\$1,639,208** **\$70,729**  
 (4.51% vs. prior year)

Domestic Relations Court Adopted Budget vs. Actual





Adopted Budget and Historical Revenues by Fund



Spreadsheet Breakdown



					Adopted Budget (\$ Change)	Adopted Budget (% Change)
General Fund						
Charges for Services	\$15,432	\$17,600	\$14,566	\$17,600	\$0	0%
Miscellaneous	\$50	\$0	\$0	\$0	\$0	0%
Other Financing	\$1,102,112	\$1,411,040	\$828,833	\$1,411,040	\$0	0%
<b>Total General Fund:</b>	<b>\$1,117,594</b>	<b>\$1,428,640</b>	<b>\$843,399</b>	<b>\$1,428,640</b>	<b>\$0</b>	<b>0%</b>
Other State & Local Grants						
Intergovernmental	\$0	\$0	\$0	\$70,729	\$70,729	N/A
<b>Total Other State &amp; Local Grants:</b>	<b>\$0</b>	<b>\$0</b>	<b>\$0</b>	<b>\$70,729</b>	<b>\$70,729</b>	<b>N/A</b>
Other Special Revenue Funds						
Charges for Services	\$120,236	\$139,839	\$121,222	\$139,839	\$0	0%
<b>Total Other Special Revenue Funds:</b>	<b>\$120,236</b>	<b>\$139,839</b>	<b>\$121,222</b>	<b>\$139,839</b>	<b>\$0</b>	<b>0%</b>
<b>Total:</b>	<b>\$1,237,830</b>	<b>\$1,568,479</b>	<b>\$964,621</b>	<b>\$1,639,208</b>	<b>\$70,729</b>	<b>4.5%</b>

## Revenues Highlights



### General Fund

- The General Fund budget consists of revenues from Charges for Services and Other Financing within the Child Support and Parent Education cost centers.
- Projected revenues remain the same at \$1,428,640.

### Other Special Revenue Funds

- Other Special Revenue Funds consist of Charges for Services within Special Project Fees and E-filing Fees.
- There is no change to the projected revenue in the 2022 Adopted Budget for this fund.

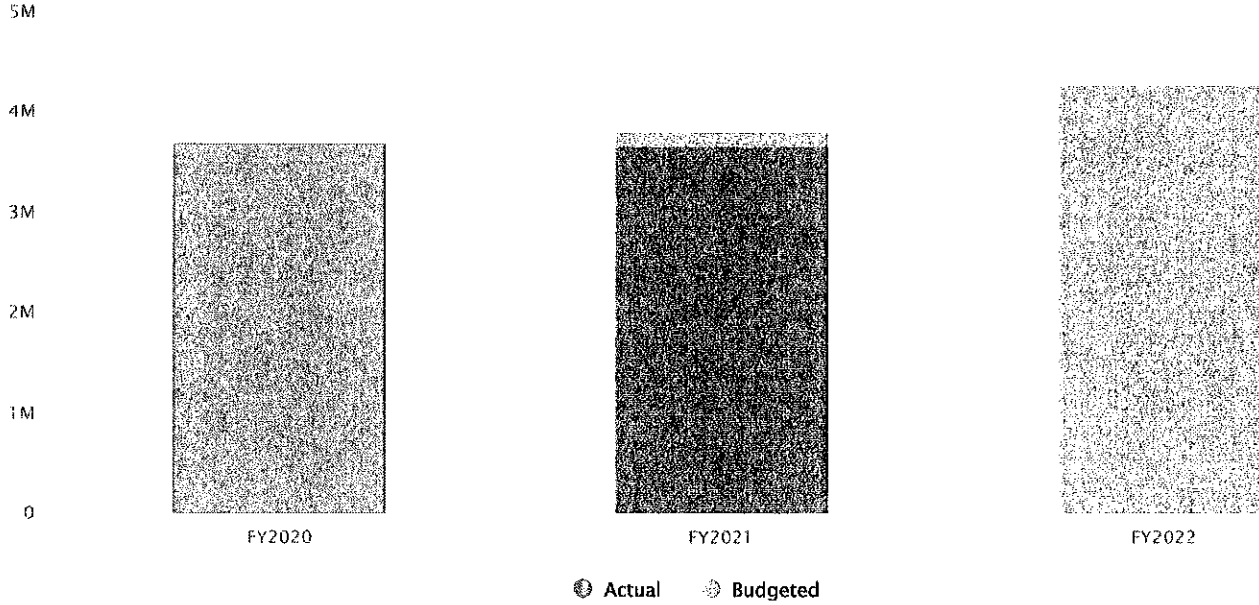
### Other State & Local Grants

- The Other State & Local Grants Fund is funded by an Intergovernmental transfer from the state to the 2021 Technology Grant (SCoO) DR Court.
- Revenues for 2022 increased \$70,729 which is a grant that will be utilized to improve technology and services within the court.



**\$4,282,135** **\$471,183**  
(12.36% vs. prior year)

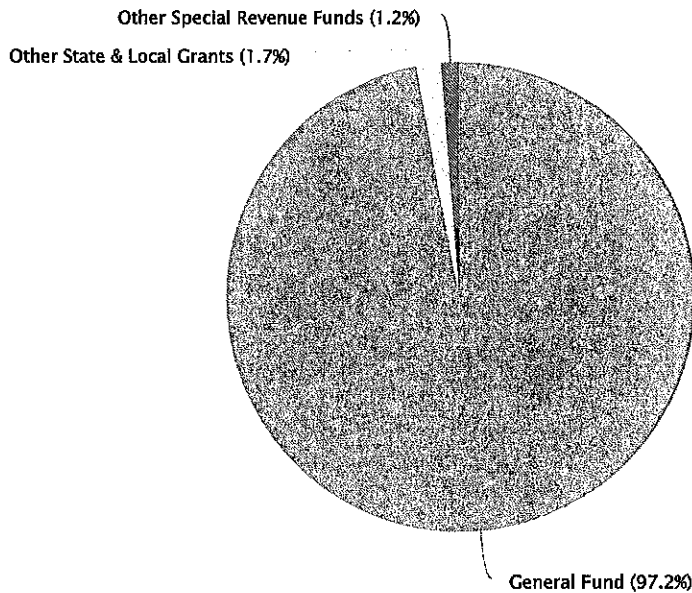
Domestic Relations Court Adopted Budget vs. Actual

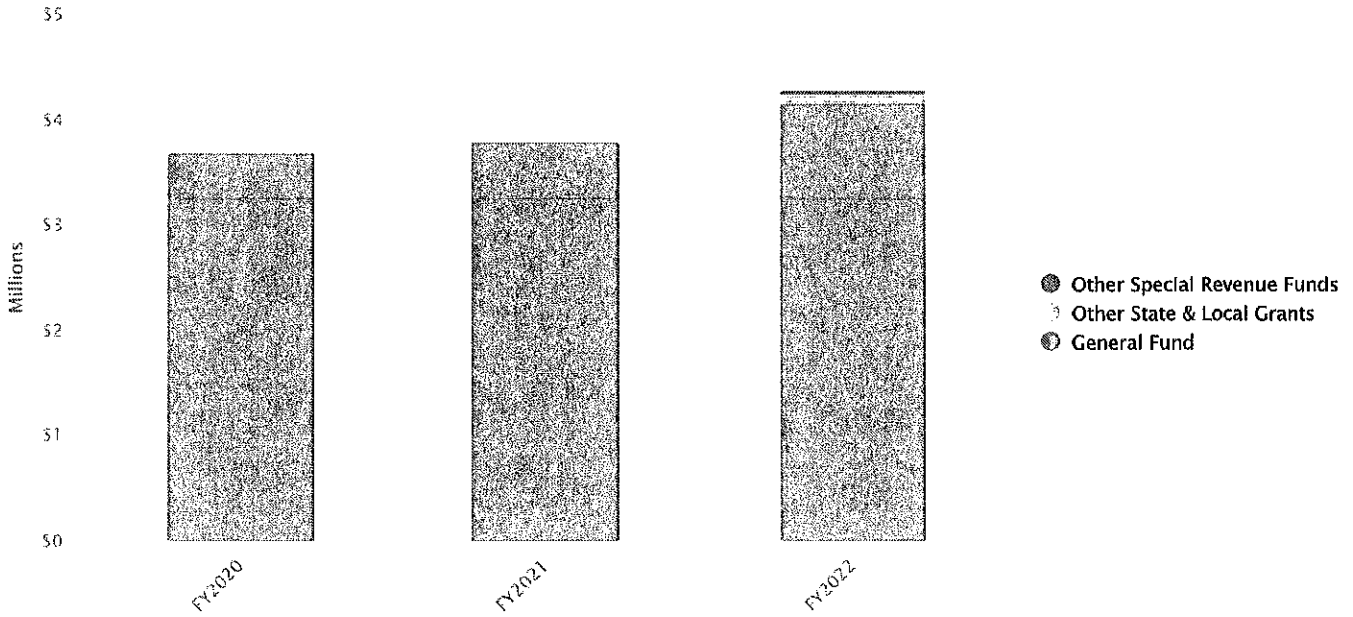


**Expenditures by Fund**



2022 Adopted Expenditures by Fund





Spreadsheet Breakdown ▼

Name	FY2020 Actual	FY2021 Adopted Budget	FY2021 Actual	FY2022 Adopted Budget	FY2021 Adopted Budget vs. FY2022 Adopted Budget (\$ Change)	FY2021 Adopted Budget vs. FY2022 Adopted Budget (% Change)
<b>General Fund</b>						
Personnel Services	\$3,470,919	\$3,555,447	\$3,381,000	\$3,688,750	\$133,303	3.7%
Operating Expenses	\$77,795	\$71,726	\$113,589	\$106,426	\$34,700	48.4%
Professional Services	\$123,517	\$173,279	\$144,808	\$260,289	\$87,010	50.2%
Capital Outlays	\$15,231	\$0	\$13,925	\$104,692	\$104,692	N/A
<b>Total General Fund:</b>	<b>\$3,687,462</b>	<b>\$3,800,452</b>	<b>\$3,653,322</b>	<b>\$4,160,157</b>	<b>\$359,705</b>	<b>9.5%</b>
<b>Other State &amp; Local Grants</b>						
Capital Outlays	\$0	\$0	\$0	\$70,729	\$70,729	N/A
<b>Total Other State &amp; Local Grants:</b>	<b>\$0</b>	<b>\$0</b>	<b>\$0</b>	<b>\$70,729</b>	<b>\$70,729</b>	<b>N/A</b>
<b>Other Special Revenue Funds</b>						
Operating Expenses	\$463	\$3,350	\$580	\$9,914	\$6,564	195.9%





					Adopted Budget (\$ Change)	Adopted Budget (% Change)
Professional Services	\$13,341	\$7,150	\$14,624	\$28,509	\$21,359	298.7%
Operating Transfers Out	\$0	\$0	\$0	\$10,000	\$10,000	N/A
Capital Outlays	\$0	\$0	\$0	\$2,826	\$2,826	N/A
<b>Total Other Special Revenue Funds:</b>	<b>\$13,804</b>	<b>\$10,500</b>	<b>\$15,204</b>	<b>\$51,249</b>	<b>\$40,749</b>	<b>388.1%</b>
<b>Total:</b>	<b>\$3,701,266</b>	<b>\$3,810,952</b>	<b>\$3,668,526</b>	<b>\$4,282,135</b>	<b>\$471,183</b>	<b>12.4%</b>

### Expenditures Highlights

01/13

#### General Fund

- The General Fund budget consists of Judicial Operating, Child Support and Parent Education cost centers.
- Operating Expenses increased \$34,700 or 48.4% due to an anticipated increase in Travel and Training, Capital Leases, Office Supplies and Subscriptions and Books.
- An increase of \$87,010 or 50.2% in Professional Services provides support services for Communications, Maintenance and Repair Contracts, Printing Services, Legal Services, and Data Processing assistance.
- Capital Outlays of \$104,692 which will be used to upgrade technology and replace office furnishings.

#### Other Special Revenue Funds

- This fund includes cost centers for E-filing Fees, Legal Research and Special Project Fees.
- Professional Services increased \$21,359 or 298.7%, to provide for various computer maintenance contracts and services rendered for Data Processing and Microsoft Dynamics service charges.
- Operating Transfer Out is budgeted at \$10,000 for e-Filing Fees. There was not anything budgeted for 2021.
- Capital Outlays are budgeted for \$2,826 which will be utilized to improve technology within the court.

#### Other State & Local Grants

- This fund consists of the 2021 Technology Grant from the state.
- Capital Outlays are budgeted for \$70,729 which will be utilized to improve technology within the court.

Our Mission



Gov

<https://cleargov.com/>

2021-2022

About (https://cleargov.com/about)

Terms & Privacy (https://cleargov.com/terms-and-conditions)

Select Language ▼

[info@cleargov.com](mailto:info@cleargov.com) or [info@cleargov.com](mailto:info@cleargov.com)